



Tokyo

Osaka

Hiroshima

Beppu

Kagoshima

Naha

Xiamen

Hong Kong

Ha Long Bay

Da Nang

Chan May (Hue/Da Nang)

Ho Chi Minh City

Phuket

Singapore

Chennai

Cochin

Trincomalee

Colombo

Mumbai



**New York**

Boston

Halifax

St John's

Nuuk

Qaqortoq

Isafjordur

Akureyri

**Reykjavik**

Tórshavn

Bergen

Oslo

**Stockholm**

Helsinki

Tallinn

Copenhagen

Hamburg

Amsterdam

**Southampton**

St Peter Port

Rouen

Saint Malo

Bordeaux

Bilbao

**Naples**

Thessaloniki

**Istanbul**

Volos

Kusadasi

Rhodes

Nafplion

Siracusa

Cadiz

Malaga

**Lisbon**

Nazareth (Haifa)

Jerusalem (Ashdod)

Transiting the Suez Canal

Ain Sukhna

Luxor (Safaga)

Petra (Aqaba)

Jeddah

## MONDAY, 13 JANUARY 2025, EMBARK SILVER DAWN

DATE	PORTS	ARRIVE	DEPART
<b>CHAPTER 1</b>			
13 Jan	<b>TOKYO</b>		<b>23:00</b>
14 Jan	DAY AT SEA		
15 Jan	OSAKA	08:00	☾
16 Jan	OSAKA		23:00
17 Jan	DAY AT SEA		
18 Jan	HIROSHIMA	08:00	23:00
19 Jan	BEPPU	08:00	16:00
20 Jan	KAGOSHIMA	09:00	23:00
21 Jan	DAY AT SEA		
22 Jan	NAHA	08:00	16:00
23 Jan	DAY AT SEA		
24 Jan	XIAMEN	08:00	☾
25 Jan	XIAMEN		13:00
26 Jan	HONG KONG	09:00	☾
<b>CHAPTER 2</b>			
27 Jan	HONG KONG		21:00
28 Jan	DAY AT SEA		
29 Jan	HA LONG BAY	08:00	☾
30 Jan	HA LONG BAY		13:00
31 Jan	CHAN MAY (HUE/DA NANG)	08:00	23:59
01 Feb	DA NANG	08:00	23:59
02 Feb	DAY AT SEA		
03 Feb	HO CHI MINH CITY	12:00	☾
04 Feb	HO CHI MINH CITY		☾
05 Feb	HO CHI MINH CITY		13:00
06 Feb	DAY AT SEA		
07 Feb	SINGAPORE	07:00	☾
<b>CHAPTER 3</b>			
08 Feb	SINGAPORE		23:00
09 Feb	DAY AT SEA		
10 Feb	PHUKET	08:00	☾
11 Feb	PHUKET		13:00
12 Feb	DAY AT SEA		
13 Feb	DAY AT SEA		
14 Feb	CHENNAI	08:00	☾
15 Feb	CHENNAI		18:00
16 Feb	TRINCOMALEE	13:00	☾
17 Feb	TRINCOMALEE		23:00
18 Feb	DAY AT SEA		

19 Feb	COLOMBO	08:00	23:00
20 Feb	DAY AT SEA		
21 Feb	COCHIN	08:00	18:00
22 Feb	DAY AT SEA		
23 Feb	MUMBAI	08:00	☾
<b>CHAPTER 4</b>			
24 Feb	MUMBAI		18:00
25 Feb	DAY AT SEA		
26 Feb	DAY AT SEA		
27 Feb	DAY AT SEA		
28 Feb	DAY AT SEA		
01 Mar	DAY AT SEA		
02 Mar	JEDDAH	09:00	☾
03 Mar	JEDDAH		18:00
04 Mar	DAY AT SEA		
05 Mar	PETRA (AQABA)	08:00	18:00
06 Mar	LUXOR (SAFAGA)	07:00	☾
07 Mar	LUXOR (SAFAGA)		17:00
08 Mar	AIN SUKHNA	08:00	20:00
09 Mar	TRANSITING THE SUEZ CANAL		
10 Mar	JERUSALEM (ASHDOD)	08:00	23:00
11 Mar	NAZARETH (HAIFA)	08:00	23:00
12 Mar	DAY AT SEA		
13 Mar	RHODES	08:00	20:00
14 Mar	KUSADASI	08:00	23:00
15 Mar	DAY AT SEA		
16 Mar	ISTANBUL	07:00	☾
<b>CHAPTER 5</b>			
17 Mar	ISTANBUL		23:00
18 Mar	DAY AT SEA		
19 Mar	THESSALONIKI	08:00	19:00
20 Mar	VOLOS	07:30	19:00
21 Mar	NAFLION	12:00	23:00
22 Mar	DAY AT SEA		
23 Mar	SIRACUSA	08:00	☾
24 Mar	SIRACUSA		13:00
25 Mar	NAPLES	08:00	☾
<b>CHAPTER 6</b>			
26 Mar	NAPLES		19:00
27 Mar	DAY AT SEA		

28 Mar	DAY AT SEA		
29 Mar	MÁLAGA	08:00	☾
30 Mar	MÁLAGA		18:00
31 Mar	CÁDIZ	08:00	☾
01 Apr	CÁDIZ		14:00
02 Apr	LISBON	08:00	☾
CHAPTER 7			
03 Apr	LISBON		17:00
04 Apr	DAY AT SEA		
05 Apr	BILBAO	09:00	23:00
06 Apr	BORDEAUX	15:45	☾
07 Apr	BORDEAUX		☾
08 Apr	BORDEAUX		17:00
09 Apr	DAY AT SEA		
10 Apr	SAINT-MALO	08:00	23:00
11 Apr	ST PETER PORT	08:00	18:00
12 Apr	SOUTHAMPTON (LONDON)	07:00	
CHAPTER 8			
12 Apr	SOUTHAMPTON (LONDON)		19:00
13 Apr	ROUEN	15:45	☾
14 Apr	ROUEN		☾
15 Apr	ROUEN		19:15
16 Apr	DAY AT SEA		
17 Apr	AMSTERDAM	08:00	☾
18 Apr	AMSTERDAM		23:59
19 Apr	DAY AT SEA		
20 Apr	HAMBURG	08:00	☾
21 Apr	HAMBURG		18:00
22 Apr	DAY AT SEA		
23 Apr	COPENHAGEN	08:00	☾
24 Apr	COPENHAGEN		18:00
25 Apr	DAY AT SEA		
26 Apr	HELSINKI	08:00	23:00
27 Apr	TALLINN	08:00	☾
28 Apr	TALLINN		17:00
29 Apr	STOCKHOLM	08:00	☾
CHAPTER 9			
30 Apr	STOCKHOLM		18:00
01 May	DAY AT SEA		
02 May	DAY AT SEA		

03 May	OSLO	08:00	☾
04 May	OSLO		23:00
05 May	DAY AT SEA		
06 May	BERGEN	08:00	23:00
07 May	DAY AT SEA		
08 May	TÓRSHAVN	08:00	18:00
09 May	DAY AT SEA		
10 May	AKUREYRI	08:00	18:00
11 May	ISAFJORDUR	08:00	18:00
12 May	REYKJAVIK	08:00	☾
CHAPTER 10			
13 May	REYKJAVIK		18:00
14 May	DAY AT SEA		
15 May	DAY AT SEA		
16 May	QAQORTOQ	08:00	17:00
17 May	NUUK	13:30	☾
18 May	NUUK		18:00
19 May	DAY AT SEA		
20 May	DAY AT SEA		
21 May	ST JOHN'S	13:00	☾
22 May	ST JOHN'S		18:00
23 May	DAY AT SEA		
24 May	HALIFAX	08:00	23:00
25 May	DAY AT SEA		
26 May	BOSTON	07:00	☾
27 May	BOSTON		18:00
28 May	DAY AT SEA		
29 May	NEW YORK	07:00	

☾ Overnight in Port



**BENEFITS & INCLUSIONS  
EXCLUSIVE TO WORLD CRUISE GUESTS**

PRIVATE EXECUTIVE TRANSFERS BETWEEN HOME, AIRPORT AND SHIP<sup>1</sup>

PERSONALISED JOURNEY TO TOKYO IN BUSINESS CLASS AIR  
(FROM SELECTED COUNTRIES/GATEWAYS)

MEET & GREET<sup>2</sup>

BON VOYAGE RECEPTION, DINNER  
AND OVERNIGHT ACCOMMODATION PRE-EMBARKATION

SHORE EXCURSIONS (ONE PER PORT, PER DAY)

\$1,000 ONBOARD SPENDING CREDIT PER GUEST (UP TO \$2,000 PER SUITE)

EXCLUSIVE WORLD CRUISE EVENTS

SPECIAL COMMEMORATIVE GIFTS

ONE OTIVM SPA TREATMENT PER GUEST

SILVER SHORE BAGGAGE VALET (UP TO 2 BAGS, 50LBS EACH, PER GUEST)

LAUNDRY SERVICE

UNLIMITED WI-FI

MEDICAL SERVICE<sup>3</sup>

VISA PACKAGE<sup>4</sup>

1 - Up to 50 miles per transfer | 2 - At selected airports of departure | 3 - Medical Service includes: visits to the Ship Medical Center, medical services typically provided for which we normally charge a fee, any medical tests administered onboard and medications prescribed by our onboard doctor to treat an ailment. We will not include refills on any prescription drugs, the cost of transferring a guest to land based facility for treatment, medical evacuations, or any other costs incurred off the ship | 4 - For USA, Canada, UK, Germany, Australia only





## A WORLD OF GOURMET OPTIONS

*Silver Dawn's* eight gourmet dining venues feature a kaleidoscope of cuisines, from Japanese to French to Italian and more. With a wider choice of options than ever before, you'll always have a great experience, whether you're looking for some elegant fine dining or something a little less formal. *Bon appétit!*





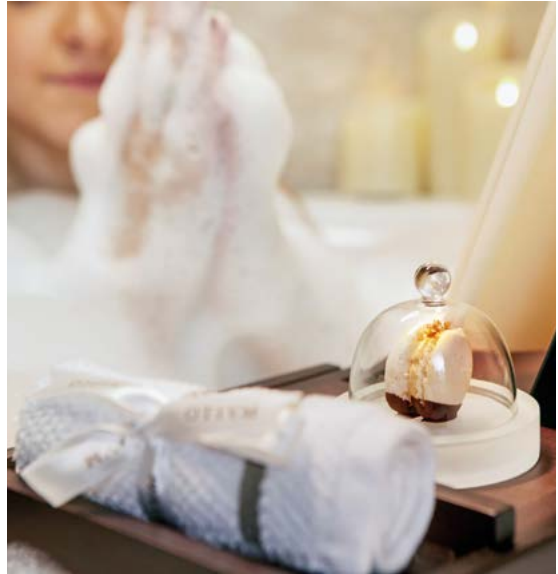
## TIME TO TAKE A BREAK

Taking time out is an important part of our *Controtempo* world cruise. Sit back, relax, and enjoy a sip of your favourite cocktail – mixed exactly how you like it by our baristas, without even having to ask them – in one of *Silver Dawn's* many venues, from Connoisseur's Corner to Dolce Vita to Arts Café and more.



## WELCOME TO OTIVM

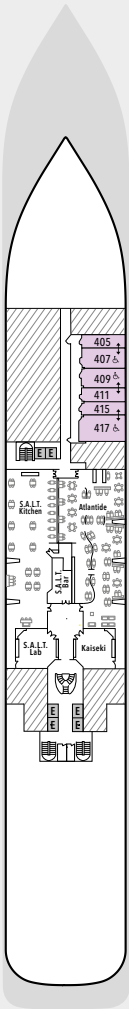
Onboard *Silver Dawn*, you'll be pampered by our brand new indulgent wellness programme, Otium, available for the first time on a World Cruise. A celebration of our Mediterranean heritage, it was inspired by the baths of ancient Rome, places of leisure to relax, socialise, bathe, eat, drink and enjoy life. From treatments in our new Otium spa to indulgent experiences right in your suite, you may find yourself wanting to stay at sea just a little bit longer.





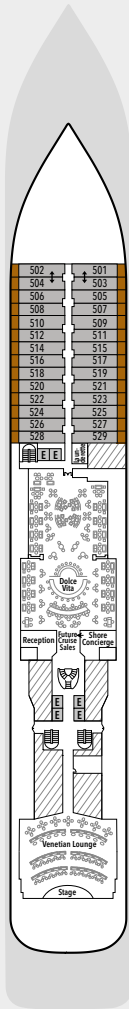


# SILVER DAWN - DECK PLANS



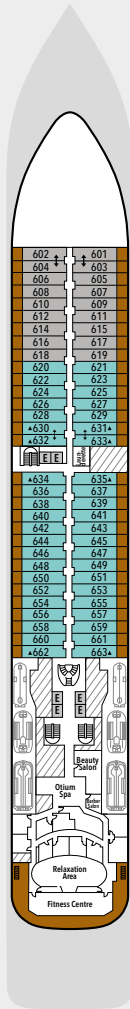
**DECK 4**

Atlantide  
Kaiseki  
S.A.L.T. Kitchen  
S.A.L.T. Bar  
S.A.L.T. Lab



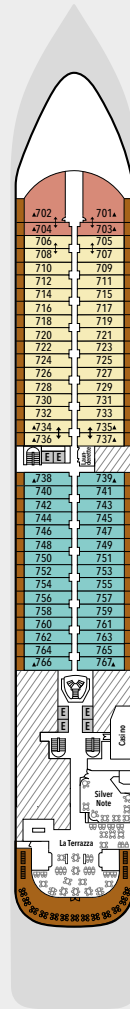
**DECK 5**

Reception/  
Guest Relations  
Shore Concierge  
Dolce Vita  
Venetian Lounge  
Future Cruise Sales



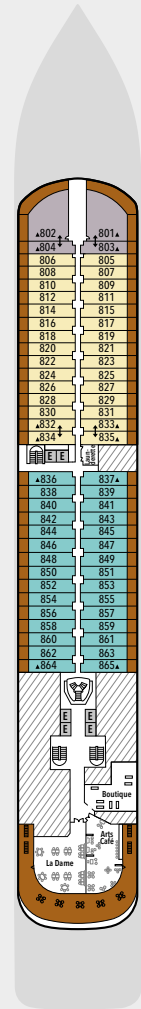
**DECK 6**

Otium Spa  
Fitness Centre



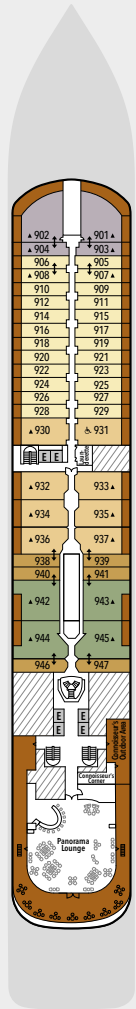
**DECK 7**

La Terrazza  
Silver Note  
Casino



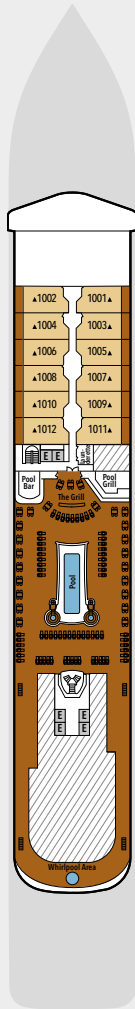
**DECK 8**

Arts Café  
Boutique  
La Dame



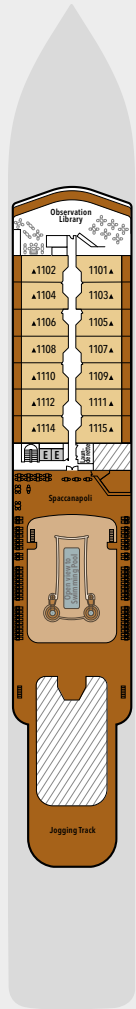
**DECK 9**

Panorama Lounge  
Connoisseur's Corner



**DECK 10**

Pool Deck  
Pool Bar  
The Grill  
Whirlpool Area



**DECK 11**

Observation Library  
Spaccanapoli  
Jogging Track

**SUITE CATEGORIES**

- Owner's Suite
- Grand Suite
- Royal Suite
- Silver Suite
- Deluxe Veranda Suite
- Superior Veranda Suite
- Classic Veranda Suite
- Panorama Suite
- Vista Suite



**SPECIFICATIONS**

Crew	411
Officers	International
Guests	596
Tonnage	40,700
Length	698 Feet / 212.8 Metres
Width	86 Feet / 27 Metres
Speed	19.8 Knots
Passenger Decks	8
3rd Guest Capacity	↕
Connecting Suites	↕
Wheelchair Accessible Suites	♿
Built	2021
Registry	Bahamas

Deck plans are for illustration purposes only and may be subject to change.

# SILVER DAWN SUITES

Suite diagrams shown are for illustration purposes only and may vary from actual square footage. Please refer to suite specifications for square footage.

## ALL SUITES FEATURE:

- BUTLER SERVICE
- REFRIGERATOR AND BAR SETUP  
STOCKED WITH YOUR PREFERENCES
- PLUSH BATHROBES
- PILLOW MENU
- LUXURY BATH AMENITIES
- COMPLIMENTARY WIFI FOR ALL SUITES
- PERSONALISED STATIONERY
- UMBRELLA
- HAIR DRYER
- WALL MOUNTED USB-C MOBILE  
DEVICE CHARGERS
- DIRECT-DIAL TELEPHONE(S)
- CHAMPAGNE ON ARRIVAL



## OWNER'S SUITE

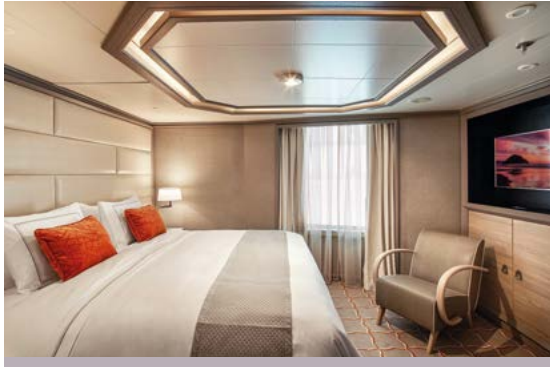
Available as a one-bedroom configuration or as a two-bedroom by adjoining with a Panorama suite (as illustrated).

**ONE BEDROOM:** 947-1055 SQ FT / 88-98 M<sup>2</sup>  
INCLUDING VERANDA (129 SQ FT / 12 M<sup>2</sup>)

**TWO BEDROOM:** 1281-1389 SQ FT / 119-129 M<sup>2</sup>  
INCLUDING VERANDA (129 SQ FT / 12 M<sup>2</sup>)

- Large veranda with patio furniture and floor-to-ceiling glass doors; bedroom two has additional large picture window
- Living room with sitting area; bedroom two has additional sitting area
- Separate dining area
- Twin beds or king-sized bed; bedroom two has additional twin beds or queen-sized bed
- Marble bathroom with double vanity, separate shower and full-sized bath, plus a powder room; bedroom two has additional marble bathroom with shower
- Custom-made luxury bed mattresses
- Walk-in wardrobe(s) with personal safe
- Vanity table(s)
- Writing desk(s)
- One 55" / 140 cm and one 40" / 102 cm flat-screen HDTVs in main suite, plus one 40" / 102 cm flat-screen HDTV in bedroom two
- Interactive Media Library
- Sound system with Bluetooth connectivity
- Illy® espresso machine
- Unlimited Premium Wifi





### GRAND SUITE

Available as a one-bedroom configuration or as a two-bedroom by adjoining with a Veranda Suite (as illustrated).

**DECK 8: ONE BEDROOM:** 1572 SQ FT / 146 M<sup>2</sup> INCLUDING VERANDA (570 SQ FT / 53 M<sup>2</sup>); **TWO BEDROOM:** 1970 SQ FT / 183 M<sup>2</sup> INCLUDING VERANDA (635 SQ FT / 59 M<sup>2</sup>)  
**DECK 9: ONE BEDROOM:** 1472 SQ FT / 137 M<sup>2</sup> INCLUDING VERANDA (474 SQ FT / 44 M<sup>2</sup>); **TWO BEDROOM:** 1873 SQ FT / 174 M<sup>2</sup> INCLUDING VERANDA (538 SQ FT / 50 M<sup>2</sup>)

- Two verandas with patio furniture and floor-to-ceiling glass doors; bedroom two has additional veranda
- Living room with convertible sofa to accommodate an additional guest
- Sitting area; bedroom two has additional sitting area
- Separate dining area
- Twin beds or king-sized bed; bedroom two has additional twin beds or queen-sized bed
- Marble bathroom with double vanity, separate shower and full-sized bath, plus a powder room; bedroom two has additional marble bathroom with full-sized bath
- Custom-made luxury bed mattresses
- Walk-in wardrobe(s) with personal safe
- Vanity table(s)
- Writing desk(s)
- One 55" / 140 cm and one 40" / 102 cm flat-screen HD TVs in main suite, plus one 40" / 102 cm flat-screen HD TV in bedroom two
- Interactive Media Library
- Sound system with Bluetooth connectivity
- Illy® espresso machine
- Unlimited Premium Wifi



### ROYAL SUITE

Available as a one-bedroom configuration or as a two-bedroom by adjoining with a Veranda suite (as illustrated).

**ONE BEDROOM:** 1130 SQ FT / 105 M<sup>2</sup> INCLUDING VERANDA (129 SQ FT / 12 M<sup>2</sup>)  
**TWO BEDROOM:** 1528 SQ FT / 142 M<sup>2</sup> INCLUDING VERANDA (194 SQ FT / 18 M<sup>2</sup>)

- Large veranda with patio furniture and floor-to-ceiling glass doors; bedroom two has additional veranda
- Living room with convertible sofa to accommodate an additional guest
- Sitting area; bedroom two has additional sitting area
- Separate dining area
- Twin beds or king-sized bed; bedroom two has additional twin beds or queen-sized bed
- Marble bathroom with double vanity, separate shower and full-sized bath, plus a powder room; bedroom two has additional marble bathroom with full-sized bath
- Custom-made luxury bed mattresses
- Walk-in wardrobe(s) with personal safe
- Vanity table(s)
- Writing desk(s)
- One 55" / 140 cm and one 40" / 102 cm flat-screen HD TVs in main suite, plus one 40" / 102 cm flat-screen HD TV in bedroom two
- Interactive Media Library
- Sound system with Bluetooth connectivity
- Illy® espresso machine
- Unlimited Premium Wifi







### SILVER SUITE

Available as a one-bedroom configuration or as a two-bedroom by adjoining with a Panorama suite (as illustrated). One suite available as a wheelchair accessible suite.

**ONE BEDROOM:** 786 SQ FT / 73 M<sup>2</sup>  
 INCLUDING VERANDA (129 SQ FT / 12 M<sup>2</sup>)  
**TWO BEDROOM:** 1119 SQ FT / 104 M<sup>2</sup>  
 INCLUDING VERANDA (129 SQ FT / 12 M<sup>2</sup>)

- Veranda with patio furniture and floor-to-ceiling glass doors
- Living room with convertible sofa to accommodate an additional guest
- Sitting area
- Separate dining area
- Twin beds or king-sized bed
- Marble bathroom with double vanity, full-sized bath, separate shower; bedroom two has additional marble bathroom with full-sized bath
- Wheelchair accessible suite has a marble bathroom with vanity and separate shower (no full-sized bath as illustrated)
- Walk-in wardrobe with personal safe
- Vanity table
- Writing desk
- One 55" / 140 cm and one 40" / 102 cm flat-screen HD TVs in main suite; plus one 40" / 102 cm flat-screen HD TV in bedroom two
- Interactive Media Library
- Sound system with Bluetooth connectivity
- Illy® espresso machine
- Unlimited Premium Wifi



### DELUXE VERANDA SUITE / SUPERIOR VERANDA SUITE / CLASSIC VERANDA SUITE

Some Veranda Suites accommodate three guests. Deluxe Verandas offer preferred central location with identical accommodations to Classic and Superior Verandas.

387 SQ FT / 36 M<sup>2</sup>  
 INCLUDING VERANDA (64 SQ FT / 6 M<sup>2</sup>)

- Veranda with patio furniture and floor-to-ceiling glass doors
- Sitting area
- Twin beds or queen-sized bed
- Marble bathroom with vanity, full-sized bath, separate shower
- Walk-in wardrobe with personal safe
- Writing desk
- One 40" / 102 cm flat-screen HD TV
- Interactive Media Library
- Unlimited Standard Wifi





### PANORAMA SUITE

Available as a one bedroom configuration.

---

334 SQ FT / 31 M<sup>2</sup> - DECK 9

---

- Sitting area
- Twin beds or queen-sized bed
- Marble bathroom with vanity, full-sized bath, separate shower
- Walk-in wardrobe with personal safe
- Writing desk
- One 40" / 102 cm flat-screen HD TV
- Interactive Media Library
- Unlimited Standard Wifi



### VISTA SUITE

Some Vista Suites are available as a wheelchair accessible suite\*.

---

334 SQ FT / 31 M<sup>2</sup> - DECK 4  
 WHEELCHAIR ACCESSIBLE SUITE: 440-646 SQ FT / 41-60 M<sup>2</sup>

---

- Sitting area
- Twin beds or queen-sized bed
- Marble bathroom with vanity, full-sized bath, separate shower
- Wheelchair accessible suite has a marble bathroom with vanity and separate shower (no full-sized bath)
- Walk-in wardrobe with personal safe; wheelchair accessible suites fitted with cupboards and wardrobe with personal safe
- Writing desk
- One 40" / 102 cm flat-screen HD TV
- Interactive Media Library
- Unlimited Standard Wifi



\* Wheelchair accessible suite does not include full-sized bath