



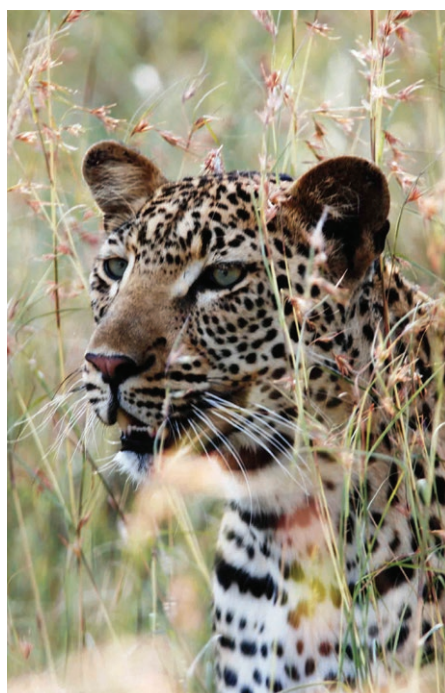
ROVOS RAIL

The Most Luxurious Train in the World



FIRST-CLASS TRAVEL

Since its establishment in 1989, Rovos Rail has earned an international reputation for its truly world-class travel experiences. Bespoke train safaris through the heart of Africa combine magnificent scenery with the glamour and excitement of the golden age of leisure travel. In a series of journeys lasting from 48 hours to 15 days, Rovos Rail links some of the subcontinent's greatest destinations. The beautifully rebuilt trains carry a maximum of 72 passengers in 36 superbly appointed suites and are also available for charter, while the Events Train caters for up to 250 guests and is suitable for daytime journeys.



The Most Luxurious Train in the World

ROVOS RAIL JOURNEYS

ROVOS RAIL JOURNEYS

- **CAPE TOWN**
Pretoria-Cape Town
2 nights/3 days 1600km
 - **DURBAN SAFARI**
Pretoria-Durban
2 nights/3 days 800km
 - **VICTORIA FALLS**
Pretoria-Victoria Falls
3 nights/4 days 1400km
 - **GOLF SAFARI**
Pretoria-Pretoria
8 nights/9 days 2100km
 - **NAMIBIA SAFARI**
Pretoria-Walvis Bay
8 nights/9 days 3450km
 - **AFRICAN COLLAGE**
Pretoria-Cape Town
9 nights/10 days 3700km
 - **DAR ES SALAAM**
Cape Town-Dar es Salaam
14 nights/15 days 5800km
 - **ANGOLA**
Dar es Salaam-Lobito
14 nights/15 days 4300km
- All journeys available in reverse



From left: Travelling the Garden Route; a Royal Suite; departure from top left: Travelling the Natal Midlands; departure at RV R. Stations; leopard; RV R. Station.



The Most Luxurious Train in the World



CAPE TOWN JOURNEY

Rediscover the old pioneering trail of the Karoo. Travel the grasslands of the gold-rich Highveld to the haunting barrenness of the Great Karoo. Trundle through the spectacular mountain ranges and scenic winelands of the Cape. Journey's end is Cape Town, the Mother City of South Africa, cradled by the imposing bulk of Table Mountain.

PRETORIA-CAPE TOWN or reverse • 3 DAYS • 1600km



CAPE TOWN HIGHLIGHTS

- **Kimberley** Tour the city, the Diamond Mine Museum and the world's largest man-made excavation, the Big Hole.
- **Matjiesfontein** Visit this quaint and authentic, perfectly preserved Victorian village founded as a refreshment stop in 1890. See the impressive museum and collection of classic railway carriages and vintage cars.



DURBAN SAFARI

Journey into the Valley of a Thousand Hills and the heart of the African bushveld. Take in the Big Five at Nambiti with its incredible biodiversity. Explore the mountains, birds and battlefields of Spionkop. Visit Ardmore Ceramics, a story about the Zulu people whose sense of rhythm, colour, dance and song is exerting its influence around the world.

PRETORIA-DURBAN or reverse • 3 DAYS • 800km



DURBAN SAFARI HIGHLIGHTS

- **Nambiti Game Drive** A Big Five bush retreat set on 20 000 acres of malaria-free bushveld with an incredible biodiversity including savannah, grasslands, thornveld and tall acacia trees.
- **Spionkop Battlefields Tour or Game Drive** Spionkop is situated on an expansive game farm and nature reserve boasting views over the Tugela River and impressive mountains.
- Visit **Ardmore Ceramics Gallery** in the foothills of the Drakensberg Mountains to experience the spirit of the African imagination.



The Most Luxurious Train in the World

VICTORIA FALLS JOURNEY

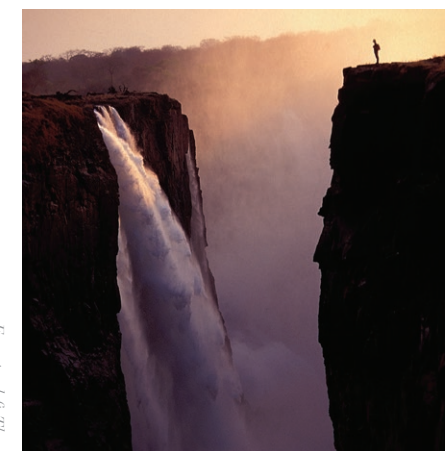
Relive the romance of a bygone era on an expedition to one of the natural wonders of the world. Travel north through Modimolle, thought by early pioneers to be the source of the Nile. Cross the Tropic of Capricorn into baobab country and Bulawayo, capital of Matabeleland and industrial capital of Zimbabwe. Travel along one of the world's longest stretches of straight railway line (114km) to Hwange for a game drive. Arrive at the incomparable Victoria Falls on the mighty Zambezi River.

PRETORIA-VICTORIA FALLS or reverse • 4 DAYS • 1400km



VICTORIA FALLS HIGHLIGHTS

- **Hwange National Park Game Drive** A rich and diverse wildlife sanctuary with over 100 species of mammals and nearly 400 bird species.
- **Victoria Falls** and the surrounding areas offer various recreational opportunities including river cruises, whitewater rafting and superb game viewing and photo safaris.



From top left: The magnificent Victoria Falls; Observation Car balcony; Royal Suite; Opposite from top left: Porters at HVR Station; Pullman Suite; game drive at Nambiti.



The Most Luxurious Train in the World



GOLF SAFARI

A kaleidoscope of golf, game and scenic beauty to entertain the most discerning players with optional excursions for leisure guests at all venues. Travel from Pretoria to Sun City in the hills of the Pilanesberg for game viewing. Cross the spectacular Drakensberg Mountains to Spionkop* to explore the bush and battlefields. Traverse the scenic Valley of a Thousand Hills to Durban* for a tour. The game drives continue at Hluhluwe, Mkhaya* and Kruger*, after which this memorable journey ends in Pretoria.*

PRETORIA-DURBAN-SWAZILAND-PRETORIA • 9 DAYS • 2100km



GOLF SAFARI HIGHLIGHTS

- Enjoy game viewing in Pilanesberg with an afternoon at the renowned Sun City.*
- Cross the majestic Drakensberg Mountains.
- Listen to the historic tale of Spionkop's* battlefields followed by lunch and an afternoon game drive.
- Tour Durban* city and the botanical gardens with lunch in the coastal resort town of Umhlanga.
- Visit one of the oldest reserves in the country, Hluhluwe, for a morning game drive.
- Arrive at Mkhaya for game viewing, Swaziland's* refuge for endangered species.
- See the decorative Swazi Candles and visit craft and curio shops.
- Enjoy a morning game drive in the world-famous Kruger Park* with lunch.
- *Golf Courses: Gary Player/Lost City, Champagne Sports Resort, Durban Country Club/Beachwood/Zimbali, Royal Swazi and Leopard Creek/White River/Nelspruit.

Dependent on availability.



The Most Luxurious Train in the World

ROVOS RAIL JOURNEYS



AFRICAN COLLAGE

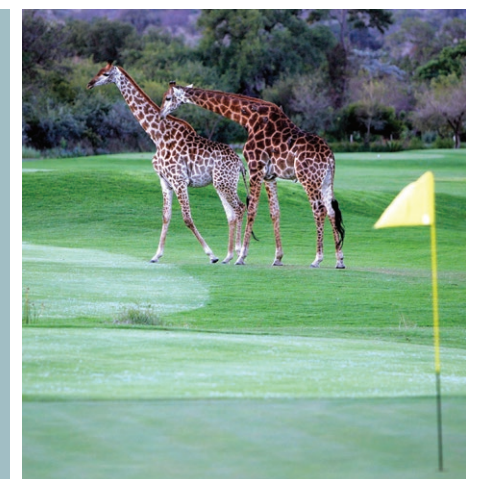
A rich tapestry of landscape, game, history and culture covering SA's top destinations. After a game drive in Kruger, travel through Swaziland to Hluhluwe for game viewing and Durban* for a tour. Traverse the rolling hills of the Midlands to explore the bush and battlefields of Spionkop*. Continue to Addo* to see the elephants and Oudtshoorn's ostriches followed by an impressive descent to the natural paradise of Knysna*. Traverse the spectacular Garden Route to the winelands before this magnificent expedition ends in Cape Town.*

PRETORIA-CAPE TOWN or reverse • 10 DAYS • 3700km



AFRICAN COLLAGE HIGHLIGHTS

- Visit Kruger* for a game drive and lunch.
- Travel through Swaziland.
- Enjoy game viewing in Hluhluwe.
- Tour Durban* and the botanical gardens with lunch.
- Travel the Valley of a Thousand Hills.
- Cross the Drakensberg Mountains.
- Visit the Spionkop* battlefields with lunch and a game drive.
- Tour Port Elizabeth, a major seaport (north only).
- Enjoy game viewing at the ecologically diverse Addo Park.*
- Visit Oudtshoorn* whose surge in prosperity was the ostrich and its feathers.
- Cross the Outeniquas.
- See George's Railway Museum with dinner at Fancourt.*
- Cruise the Knysna* lagoon followed by shopping or a guided walk.
- Travel the Garden Route to the Cape winelands.
- *Optional Golf: Leopard Creek/White River/Nelspruit, Durban Country Club/Beachwood/Zimbali, Champagne Sports Resort, Humewood, Fancourt and Ernie Els Oubaii/Pezula.



The Most Luxurious Train in the World



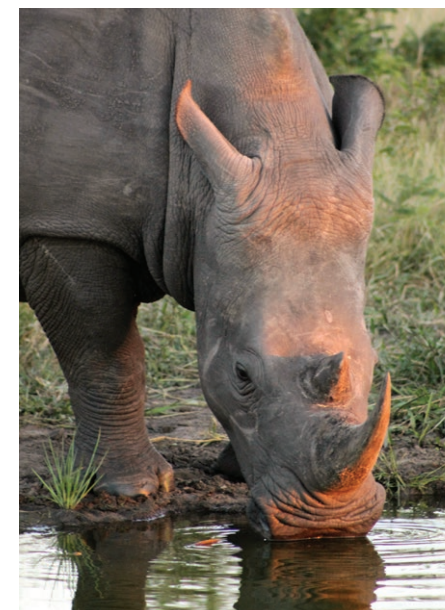
DAR ES SALAAM JOURNEY

This epic expedition is one of the most famous train journeys in the world. From Cape Town, traverse the Karoo with visits to the historic village of Matjiesfontein, Kimberley's Diamond Mine Museum and the extraordinary Big Hole. Tour the capital city of Pretoria and enjoy the Big Five at Madikwe. Explore one of the natural wonders of the world, the Victoria Falls, before crossing the mighty Zambezi into Zambia for a bush walk at Chisimba Falls. Descend into the Rift Valley and witness spectacular scenery as the train negotiates the tunnels, switchbacks and viaducts of the escarpment. Pass the Selous – the largest reserve on the continent and a vision of timeless Africa – shortly before the bustling arrival in Dar es Salaam.

CAPE TOWN-DAR ES SALAAM or reverse • 15 DAYS • 5800km



The Most Luxurious Train in the World

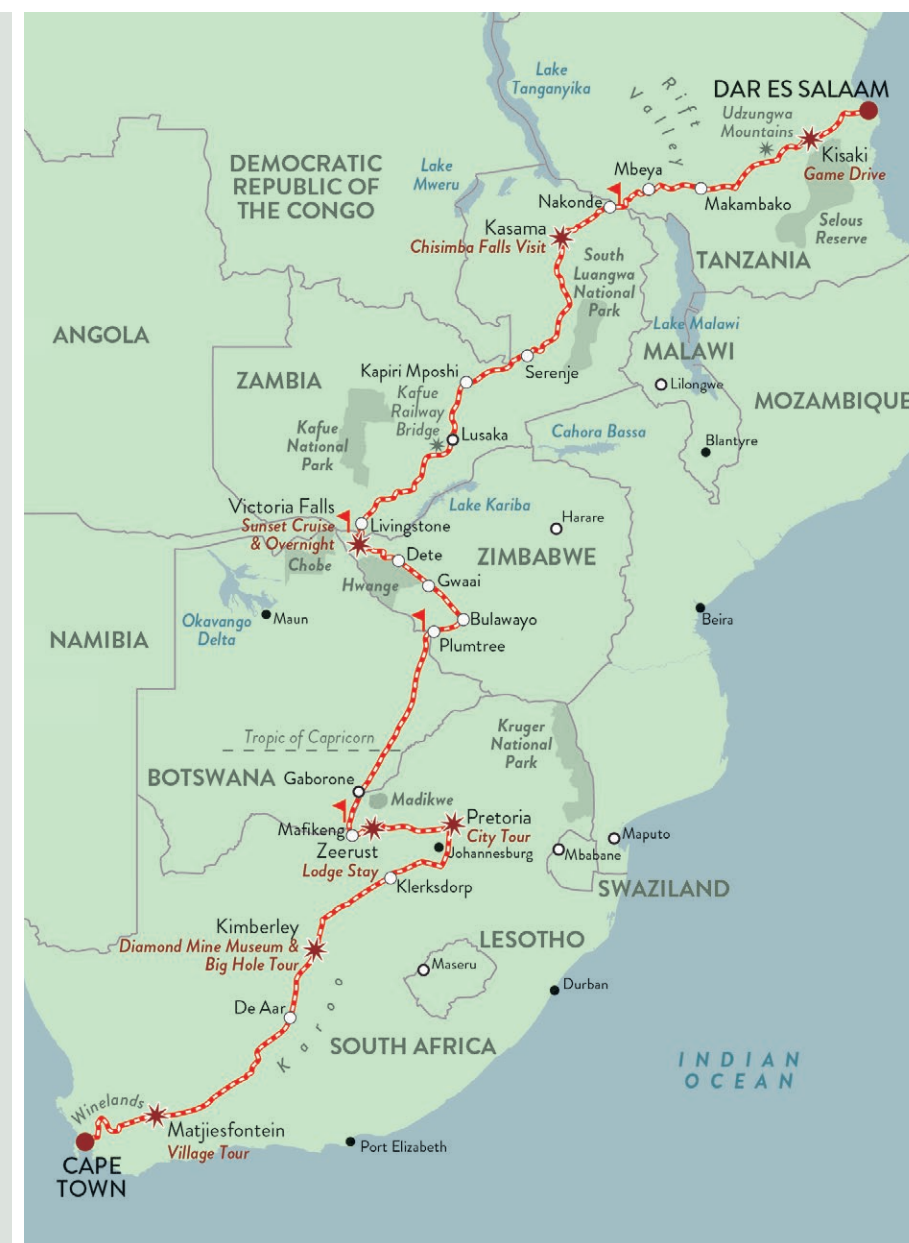


DAR ES SALAAM HIGHLIGHTS

- Tour Kimberley, the Diamond Mine Museum and the world's largest man-made excavation, the Big Hole.
- Visit Matjiesfontein, a quaint and perfectly preserved Victorian village. See the museum and collection of vintage cars and classic railway carriages.
- Traverse the Karoo.
- Tour Rovos Rail Station with lunch.
- Tour the capital, Pretoria.
- Enjoy two nights at a lodge in the Madikwe Big Five Reserve with game drives.
- Travel on one of the world's longest stretches of straight railway line (114km) between Gwaai and Dete.
- Overnight at Victoria Falls Hotel with a sunset cruise on the Zambezi (a variety of recreational activities are available).
- Cross the Zambezi River on Victoria Falls Bridge.
- Cross Kafue Railway Bridge, a 477m-long steel girder truss bridge of 13 spans each at 33m supported on concrete piers.
- Enjoy a bush walk at Chisimba Falls.
- Take an optional walk at Makambako.
- Traverse the Udzungwa Mountains and Rift Valley.
- Enjoy game viewing in the Selous.
- On-board doctor, hair stylist and historian giving informative lectures.



From left: Rhinos game drive at Madikwe. Opposite from top left: Dinner in the Dining Car; bushbuck tree; a rhino in Dar es Salaam; crossing the Victoria Falls Bridge.



The Most Luxurious Train in the World



NAMIBIA SAFARI

A remarkable journey of discovery from the savannahs of the Highveld to the Atlantic in the west. Traverse stark vistas to Kimberley, Upington and the Fish River Canyon, second in size to the Grand Canyon. Cross the untamed beauty of the Kalahari Desert with its Quiver trees to Namibia's lively capital Windhoek. Enjoy stays in the renowned Sossusvlei, a stunning pan in the Namib Desert, and the game-rich Etosha before arriving in the 19th-century town of Swakopmund and the deepwater harbour of Walvis Bay:

PRETORIA-WALVIS BAY or reverse • 9 DAYS • 3450km



NAMIBIA SAFARI HIGHLIGHTS

- Savour the 1870s atmosphere of the mining village **Kimberley**, centre of one of the world's famous diamond rushes.
- Traverse the **Karoo**.
- Enjoy a walking tour of **Upington**.
- Visit the **Fish River Canyon**.
- Enjoy a visit to **Garas Park**, home to roughly 300 specimens of the Aloe dichotomus.
- Tour **Windhoek** and its **train museum**.
- Take a short flight to **Sossusvlei** for a **lodge stay**, drive, bush dinner and breakfast near **Deadvlei** and **Star Dune 45**. The wind blows from all directions causing sand to form a star shape with multiple arms, hence 'star dunes'.
- Enjoy a **lodge stay** and **game drives** in **Etosha**, which gets its name from the Etosha pan, a large salt pan forming part of the Kalahari Basin.
- Cross the **Namib Desert** to the wild **Atlantic** coast.



The Most Luxurious Train in the World



From top left: Chisimba Falls excursion; Luanda is the capital of Angola; there are many shipwrecks along the Skeleton Coast; Swakopmund lighthouse. Opposite from top left: Dinner is an elegant affair; brown-headed Kingfisher; Namib Desert landscape.

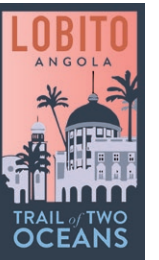
TRAIL OF TWO OCEANS

A pioneering trans-African adventure uniting the Atlantic and Indian Oceans – the first time in history a passenger train will travel the famous east-to-west copper trail. Set off from Dar es Salaam (Tanzania) with a game visit in the Selous, a fly-in two-night safari in South Luangwa (Zambia) and a tour of Lubumbashi (DRC). Join the Benguela line for short walking tours detailing Angola's recent history with journey's end in Lobito.

DAR ES SALAAM-LOBITO or reverse • 15 DAYS • 4300km

TRAIL OF TWO OCEANS HIGHLIGHTS

- Enjoy a **game drive** at **Selous**, the largest reserve in Africa.
- Traverse the **Rift Valley** and **Udzungwa Mountains**.
- Take an optional stroll through **Makambako**.
- Pass **baobab** forests.
- Enjoy a bush walk at **Chisimba Falls**.
- Take a short flight to **South Luangwa** for a **two-night lodge stay** with **game drives**.
- Tour **Lubumbashi**.
- Join the historical east-west **Copper Trail**.
- Visit an area that holds one of the world's largest known **copper** and **cobalt** resources.
- Enjoy a walking tour of **Luau**, the start of the Benguela line.
- Travel alongside the **Kasai River**.
- Tour **Luena**.
- Visit **Kuito**, the historical heart of the Ovimbundu kingdom.
- Enjoy a walking tour of **Huambo**, one of the old kingdoms on the central plateau.
- **Benguela** (optional extension).
- On-board doctor, hair stylist and historian giving informative **lectures**.



The Most Luxurious Train in the World



PRIVATE CHARTERS & EVENTS

From our headquarters in Pretoria, successful charters from one to 10 days have been undertaken with incentive groups, historical expeditions, cycling tours, bird shoots and private family gatherings. There are many configurations combining our 42- or 72-bed train with other entertaining products and we are happy to construct exciting and practical itineraries to suit. Within reason, and subject to availability, the chartered train can go wherever there is a railway line in Southern Africa. The Events Train can accommodate up to 250 guests and is an ideal venue for weddings, launches, conferences and private functions.

THE EVENTS TRAIN

- Perfect venue for **private functions, launches** and **wedding** couples looking for something old-world and romantic.
- Take a **three-hour circular trip** around Pretoria or a **one-way journey** to any destination **within eight hours'** rail travel time from Pretoria (no overnight journeys).
- Depending on the number of guests, the train can host, with full bar facilities: a four-course sit-down lunch/dinner for **up to 120 guests** OR for **up to 250 guests**, hot snacks, canapés and cocktails.
- Dinner runs are popular and fine-dining, elegant affairs. **Example:** Guests are greeted at our private station by a Champagne reception; musicians play light classical music; our steam loco idles on the platform; time for intros and photos; time for speeches while the loco collects the coaches; depart for a circular tour of Pretoria; drinks served in the bar cars; dinner is presented in the opulent dining cars; return to the station.



The Most Luxurious Train in the World



ROVOS RAIL STATION

A highlight of any journey is a visit to Rovos Rail's private station in Pretoria. This is the busy hub of a provisioning operation, which rivals that of a world-class hotel in terms of efficiency and attention to detail. The 60-acre property boasts a small railway museum in addition to its other comprehensive facilities and will, with the addition of semaphore signals and a footbridge, recreate the atmosphere of a fully fledged railway system.

HOME & HEADQUARTERS

Rail enthusiasts will be drawn to the vast carriage and loco sheds where teams of dedicated personnel keep the rolling stock in order. This 10 000m² roofed workshop straddles 15 railway lines with concrete inspection pits below and is the ultimate repair and maintenance facility for any train operation. The low, red-bricked buildings alongside the 300m platform house laundries, gleaming stainless-steel kitchens and well-stocked storerooms.



The Most Luxurious Train in the World



ROYAL SUITES

±16m²
±172ft²



Double Lengthways

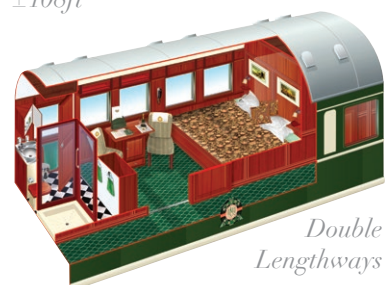


Split Twin

Minibar, air conditioning, writing desk, luggage shelf, cupboards, safe, en-suite bathroom with toilet, bath and shower.

DELUXE SUITES

±10m²
±108ft²



Double Lengthways

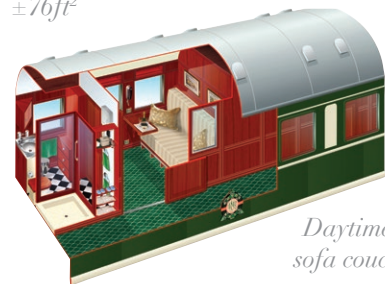


Double Crosswise

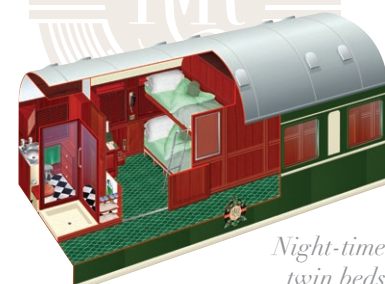
Minibar, air conditioning, writing desk, luggage shelf, cupboards, safe, en-suite bathroom with toilet and shower.

PULLMAN SUITES

±7m²
±76ft²



Daytime sofa couch



Night-time twin beds

Night-time double bed or side-by-side twin

Tea drawer, air conditioning, fold-out writing desk, luggage shelf, cupboards, safe, en-suite bathroom with toilet and shower.

Bed Dimensions: LxW in CM
Double: 200x189
Split Twin: 200x75

Bed Dimensions: LxW in CM
Double Lengthways: 189x189
Double Crosswise: 189x160
Split Twin: 189x75

Bed Dimensions: LxW in CM
Double: 189x150
Side-by-side Twin: 189x75
Single lower: 189x94
Single upper: 189x60

THE SUITES & COACHES

Each train has accommodation carriages, dining cars, a lounge car (±26 seats), small gift shop, smoking lounge (±11 seats) and observation car (±32 seats) with open-air balcony. The three types of suites are elegant and spacious offering passengers privacy, comfort and luxury with double or twin beds and fittings and facilities that are of the highest standard. All have en-suites with shower, toilet, basin and bath (Royal only), tea facilities, safes, air conditioning, linen and amenities and are serviced daily. There is adequate storage and small cupboards with hangers and shelves.

Suite layouts may differ from images.

ROYAL SUITES



DELUXE SUITES



PULLMAN SUITES



PILLARED DINING CAR



BANQUETTE DINING CAR



OBSERVATION CAR



LOUNGE CAR



CLUB LOUNGE & DELUXE CAR



STAFF CAR



KITCHEN CAR



GENERATOR CAR



ROVOS RAIL JOURNEYS



LIFE ON BOARD

Recapture the romance of a bygone era when travellers experienced the magic and mystery of Africa in a relaxed and elegant fashion. The classic wood-panelled coaches are the epitome of luxury with period Edwardian features combining with modern technology. The 24-hour service is discreet and friendly with an enthusiastic team of chefs ensuring guests' every need is catered for. There is an accent on fresh local ingredients and traditional dishes are a specialty. Every morning there is a full breakfast with dishes cooked to order. Meals are served in one sitting only and are complemented by South Africa's finest wines. For days on the train dress is smart casual while evening attire is more formal. In maintaining the atmosphere there are no radios or television sets on board and the use of technology that has the ability to disturb other guests is confined to the privacy of suites.

From top left: Split Twin Deluxe; daytime sitting in the Pullman Suite; Royal Suite bathroom with bath and shower; relaxing in a Royal Suite.



The Most Luxurious Train in the World

The Most Luxurious Train in the World



ROVOS RAIL HEAD OFFICE 1 TRANSNET AVE, PRETORIA, SOUTH AFRICA 0084

PO BOX 2837 PRETORIA, GAUTENG, SOUTH AFRICA 0001 T: +27 (0)12 315 8242 F: +27 (0)12 315 8320

CAPE TOWN 1 ADDERLEY ST, CAPE TOWN 8002 • POSTNET SUITE 15, PRIVATE BAG X100, CAPE TOWN 8000

T: +27 (0)21 421 4020/21 F: +27 (0)21 421 4022 E: reservations@rovos.co.za W: rovos.com